



Pooch Park Public Meeting  
January 23<sup>rd</sup>, 2024  
6:30PM



# Overall Concept

## BREAKOUT AREA

- A** Agility Course
- B** Puppy Area (4 months - 1 year)
- C** Small Dog Area (35 pounds & Under)

## LEGEND

- 1** Resurfaced Asphalt Path
- 2** New Asphalt Path
- 3** Asphalt Gate Apron
- 4** Dog Park Expansion
- 5** Fence Adjustment for Increased Safety
- 6** Puppy Area Fence
- 7** New Picnic Shelter with 3 Tables
- 8** Picnic Grove with 3 Tables
- 9** Picnic Table with Concrete Pad
- 10** (7) Bench with Concrete Pad
- 11** Agility Course with Added Equipment
- 12** Synthetic Turf Surfacing
- 13** Dog Wash Station with Grooming Table
- 14** Native Shade Tree



# Proposed Improvements

- Pave path through park
- New 16 x 16 shelter
- Move north fence to expand the park an additional 70,000 sq/ft
- Separate existing small dog area into two areas:
  - Small dog area for dogs under 35 lbs
  - Puppy area for dogs under 12 months
- Replace several of the agility pieces and add synthetic turf
- New benches, garbage cans and picnic tables with concrete pads
- Dog wash station
- Timeline-mid to late summer



# Pathway Improvements



- The path through the park and area under shelter will be paved.
- Alternate bid to pave path outside of park and will depend on overall project costs.
- Entrances to each gated area will be paved to reduce turf wear and mud spots.



# Shelter



- New 16ft x16ft shelter with picnic tables underneath.
- Located near the south entrance to the park.



# Shelter



# Fencing-Park Expansion



- Move the north fence further north
- Will increase the play area by approx. 70,000 sq/ft
- Include several picnic tables on pads



# Fencing-Small Dog/Puppy Areas and Corners

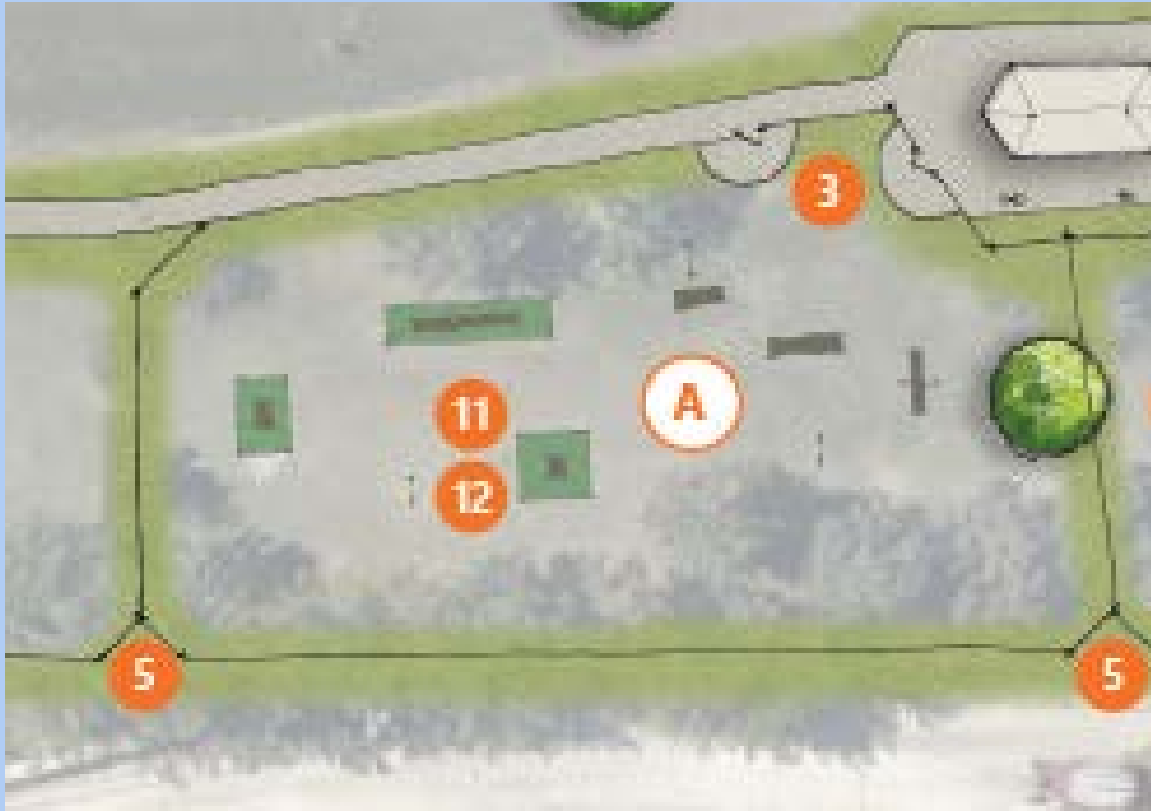


- Current small dog area will be split into two areas-puppy and small dogs.
- Puppies will be dogs 12 months and under. Small dog area will be for dogs 35lbs and under.
- The space closest to the north entrance will have a gated entrance within the main gate, allowing someone with a small dog to go directly into that area.
- Corners eliminated to reduce confrontations.





# Agility Equipment



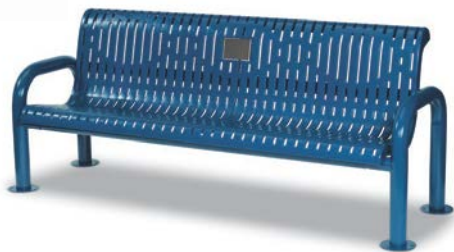
- Synthetic turf squares to be placed under select items prone to turf wear.
- Several of the older pieces will be replaced with like items.
- One new activity will be added.



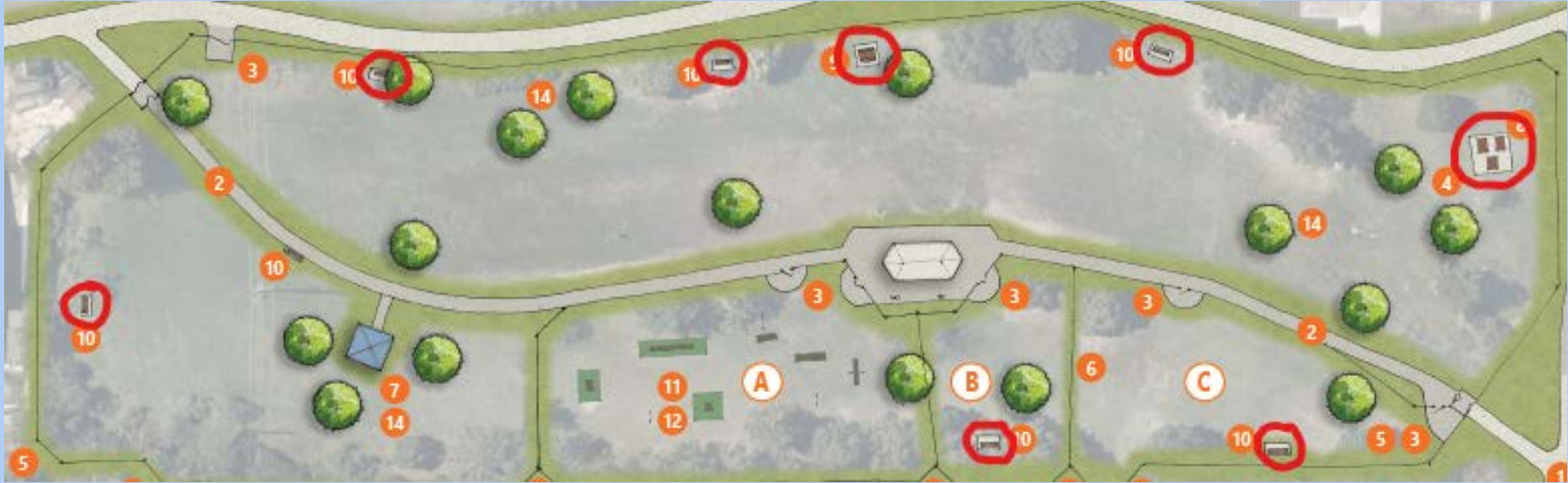
# Agility Equipment



# Benches & Picnic Tables



# Bench/Table Locations



- New benches, picnic tables and garbage cans throughout the park.
- Amenities to be installed on concrete pads to eliminate turf wear and mud spots.



# Dog Wash Station



- New dog wash station to be included near south parking lot. This amenity will be dependent upon project costs.



# Landscaping



- New trees planted throughout the park to create more shade.
- Shrubs along west fence line to be removed.
- Brush along south and east fence line to be cleaned up.



# Questions/Comments

## BREAKOUT AREA

- A** Agility Course
- B** Puppy Area (4 months - 1 year)
- C** Small Dog Area (35 pounds & Under)

## LEGEND

- 1** Resurfaced Asphalt Path
- 2** New Asphalt Path
- 3** Asphalt Gate Apron
- 4** Dog Park Expansion
- 5** Fence Adjustment for Increased Safety
- 6** Puppy Area Fence
- 7** New Picnic Shelter with 3 Tables
- 8** Picnic Grove with 3 Tables
- 9** Picnic Table with Concrete Pad
- 10** (7) Bench with Concrete Pad
- 11** Agility Course with Added Equipment
- 12** Synthetic Turf Surfacing
- 13** Dog Wash Station with Grooming Table
- 14** Native Shade Tree



# Pooch Park Contacts

Claudia Bidstrup, Aquatics and Facility Manager

[Cbidstrup@skokieparks.org](mailto:Cbidstrup@skokieparks.org)

(847) 674-1500 ext. 2722

Corrie Guynn, Supt. of Parks, Planning and Facilities

[Cguynn@skokieparks.org](mailto:Cguynn@skokieparks.org)

(847) 674-1500 ext. 2802

